



**INTERNATIONAL
SYMPOSIUM
ON PUBLIC
REUSE CENTRES**

**4-5 JUNE 2026
MECHELEN & BRUSSELS**

PROGRAMME

This symposium is organized by Rotor in collaboration with the PREUSE project partners: Mechelen, Bellastock, Métropole du Grand Paris, City of Wiltz, City of Lorient, City of Utrecht, Luxembourg Institute of Science and Technology, La Fabrique des Quartiers.



This event is co-funded by the European Union via the Interreg NWE programme (PREUSE project).

It also benefits from the support of: Brussels Environment (as part of the Renolution programme), Mechelen, University of Ghent, École des Arts Décoratifs de Paris, Valdelia, cnfpc and ULB Faculté d'Architecture La Cambre Horta.



DAY 1

JUNE 4TH MECHELEN

AT LAMOT CONGRESS & HERITAGE CENTRE

PLENARY SESSIONS

09:00 **OPENING REMARKS & INTRODUCTION ON THE PREUSE PROJECT**
PRESENTATION OF THE SYMPOSIUM PROGRAMME AND A BRIEF INTRODUCTION ON THE PREUSE PROJECT AND ITS MAIN DELIVERABLES.

09:45 **A "METABOLIC URBAN PLANNING"? CHALLENGES AND CONTRADICTIONS**
LECTURE BY MARTIAL VIALLEIX (FR, L'INSTITUT PARIS REGION, UNIVERSITÉ PARIS-DAUPHINE) ON URBAN MATERIAL FLOWS FROM THE PERSPECTIVE OF METABOLISM STUDIES AND URBAN PLANNING.

10:30 **COFFEE BREAK**

11:00 **PUBLIC LAND: AN ESSENTIAL HERO OF THE CIRCULAR CITY**
LECTURE BY SARAH DE BOECK (BE, IDEA CONSULT) ON PUBLIC LAND AND URBAN PLANNING AS LEVERAGES TO MAKE SPACE FOR THE REUSE ECONOMY.

11:45 **FROM MAINTENANCE TO REUSE: THE MUNDANE WORK OF MAKING THINGS LAST**
LECTURE BY JÉRÔME DENIS (FR, MINES PARIS - PSL, CENTRE DE SOCIOLOGIE DE L'INNOVATION) ON THE OFTEN OVERLOOKED LABOUR AND SKILLS REQUIRED TO MAINTAIN AND REUSE MATERIALS.

12:30 **CLOSING REMARKS & NETWORKING LUNCH**

CYCLE A: MATERIALS

14:00 **A1: FINISHING MATERIALS**
WITH HUGO BONNET (CYCLE UP, FR) AND AUGUST SMESSAERT (MATERIALENBANK LEUVEN, BE)
MODERATOR: *PATTY KOPPENS (WILTZ)*

15:00 **A2: ROADWORK MATERIALS**
WITH PAUL LESIEUR (UNIVERSITÉ GUSTAVE EIFFEL, FR) AND MIEKE BERKHOUT (MUNICIPALITY OF AMSTERDAM, NL)
MODERATOR: *SIMON GRESSET (METROPOLE DU GRAND PARIS)*

16:00 **COFFEE BREAK**

16:30 **A3: HISTORICAL MATERIALS**
WITH PAULA LAGE (CITY OF PORTO, PT) AND LARA REYNIERS (VRIJE UNIVERSITEIT BRUSSEL, BE)
MODERATOR: *ARNE VANDE CAPELLE (UNIVERSITEIT GENT)*

CYCLE B: PROJECTS

14:00 **B1: THE PUBLIC-PRIVATE REUSE CENTRE: THE CASE OF ROUBAIX (FR)**
WITH VALENTIN MOUSAIN (LILLE EUROPEAN METROPOLIS, FR), LÉO PARES (CITY OF ROUBAIX, FR), ROMAIN FINE (LA FABRIQUE DES QUARTIERS, FR) AND AGNIESZKA BOGUCKA (PRESRV, FR)
MODERATOR: *ZELIE PERRIN (METROPOLE DU GRAND PARIS)*

15:00 **B2: THE INTERNAL REUSE CENTRE: THE CASE OF UTRECHT (NL)**
WITH LIESKE OOSTVEEN AND MIRJAM SCHOLTENS (CITY OF UTRECHT, NL)
MODERATOR: *QUIRIEN REIJTENBAGH (TU DELFT)*

16:00 **COFFEE BREAK**

16:30 **B3: THE TEMPORARY REUSE CENTRE: THE CASE OF NANCY (FR)**
THIS ROUNDTABLE WILL BE IN FRENCH
WITH JÉRÔME BURTIN (MAISON DU RÉEMPLOI, FR), ARNAUD GAUTHIER (AJIR ENVIRONNEMENT, FR) AND JEAN-FRANÇOIS BRICHE (OMH, FR)
MODERATOR: *TIPHAIN ABENIA (UNIVERSITÉ LIBRE DE BRUXELLES)*

ROUNDTABLES

17:30 **NETWORKING DINNER (ON REGISTRATION)**

19:00 **KEYNOTE LECTURE: BUILDING A CULTURE OF CIRCULARITY**
PUBLIC KEYNOTE LECTURE BY FINN WILLIAMS (SE/UK), CITY ARCHITECT OF MALMÖ AND CO-FOUNDER OF PUBLIC PRACTICE

KEYNOTE

DAY 2

JUNE 5TH BRUSSELS

AT COOP ANDERLECHT

**PUBLIC
SITE VISITS**

09:00 **SITE VISITS OF REUSE INFRASTRUCTURE IN BRUSSELS**

BRUSSELS MUNICIPAL DEPOT FOR ROADWORK MATERIALS

RUE DU BRUEL 82, 1130 BRUSSELS
GUIDED TOUR WITH CITY SERVICES

RECYPARK DEMETS

FERNAND DEMETSKAAI 22, 1070 BRUSSELS
GUIDED TOUR WITH PROJECT ARCHITECT YANN GUEGUEN (51N4E, ALTER)

12:00 **NETWORKING LUNCH**

**PARALLEL
WORKSHOPS**

13:30 **WORKSHOP 1:
A STRATEGY TO SET
UP AND RUN A
REUSE CENTRE**
HOSTED BY ROTOR (BE)

13:30 **WORKSHOP 2:
THE ARCHITECTURE
OF REUSE CENTRES**
HOSTED BY BELLASTOCK
(FR) AND TIPHAINE ABENIA
(UNIVERSITÉ LIBRE DE
BRUXELLES)

13:30 **WORKSHOP 3:
EXPERIENCES FROM
THE EUROPEAN
CIRCULAR[X]CHANGE
NETWORK**
HOSTED BY
MATERIALNOMADEN (AT)

DAY 1 THURSDAY JUNE 4TH

MECHELEN - LAMOT CONGRESS & HERITAGE CENTRE

MORNING PROGRAMME: PLENARY LECTURES

After an introduction on the PREUSE project, the main goal of the morning programme will be to explore what exactly is at stake when setting up a reuse centre. Three researchers will each elaborate on a theoretical framework to help navigate its political, social and ecological context.

8:30 WELCOME & COFFEE

9:00 OPENING REMARKS & INTRODUCTION ON THE PREUSE PROJECT

Presentation of the symposium programme and a brief introduction on the PREUSE project and its main deliverables.

9:45 A "METABOLIC URBAN PLANNING"? CHALLENGES AND CONTRADICTIONS

Lecture by **Martial Vialleix** (FR, L'Institut Paris Region, Université Paris-Dauphine) on urban material flows from the perspective of metabolism studies and urban planning.



Martial Vialleix holds a project manager position in the Urban and Rural Environment Department (DEUR) at the Paris Region Institute. He is an urban planner specializing in urban and regional ecology. His work focuses on conducting strategic environmental assessments of plans and programs at various territorial scales (Regional Plan for Waste Prevention and Waste Management for Île-de-France, the Regional Forest and Wood Program, etc.) and on the implementation of the circular economy at a regional level (study of urban metabolism in the Greater Paris Metropolis, etc.) He is also an associate researcher at the Géographie-cités UMR 8504 laboratory, having defended a doctoral thesis in geography and urban planning under the supervision of Sabine Barles in 2025. His research aims to understand how the territorial metabolism approach is embodied in public policies, and how urban planning integrates material issues into its tools.

This presentation takes place between recent urban metabolism research advances and circular cities policies dynamics. More specifically, it will address urban metabolic issues (at regional and metropolitan scales mainly) and how planning and construction sectors are dealing with those issues. The aim is to underpin that both a material and spatial vision of circular and metabolic matters is crucial to get more sustainable urban spaces. Several questions will be discussed :

What are the material and space issues that the meeting between urban metabolism and urban planning needs to address ?

How urban planners and actors understand and implement urban metabolism 'approach' ?

How urban planning instruments and tools and urban policies might be able to tackle metabolic issues ?

10:30 COFFEE BREAK

11:00

PUBLIC LAND: AN ESSENTIAL HERO OF THE CIRCULAR CITY

Lecture by **Sarah De Boeck** (BE, IDEA Consult) on public land and urban planning as leverages to make space for the reuse economy.



Sarah De Boeck is a researcher and strategic advisor at IDEA Consult and the Vrije Universiteit Brussel in Belgium. Her work focuses on space for economic activities and the principle of 'no net land take'. She supports organisations and public authorities in managing public assets and guiding the transition to a sustainable economy.

This lecture argues that public land and public ownership form an essential infrastructure of both the foundational and circular economy of cities. It recognises the real pressures public landowners face, including financial constraints, regulatory demands, and rising maintenance costs. The lecture then presents practical strategies to keep public land in public hands while enabling circular urban development.

11:45

FROM MAINTENANCE TO REUSE: THE MUNDANE WORK OF MAKING THINGS LAST

Lecture by **Jérôme Denis** (FR, Mines Paris - PSL, Centre de sociologie de l'innovation) on the often overlooked labour and skills required to maintain and reuse materials.



Jérôme Denis is a Professor of Science and Technology Studies at Mines Paris - PSL, and director of the Center for the sociology of innovation. His research focuses on two main areas: data labor in companies and administration, and maintenance practices. Together with David Pontille, he participated in the emergence of an international and interdisciplinary community around maintenance and repair studies, notably through the organization of conference panels and the edition of several special issues. He currently works on the relationships between architecture and maintenance. He recently published *The care of things. Ethics and politics of maintenance* (Polity, 2025) with David Pontille, and they both edited with Fernando Domínguez Rubio *Fragilities. Essays on the Politics, Ethics, and Aesthetics of Maintenance and Repair* (MIT Press, 2025)

Alongside the heroic actions involved in a few remarkable projects, reuse is also a matter of repetitive unnoticed interventions, which are directly connected to ordinary maintenance. Through these mundane activities, reuse cultivates a situated expertise of materials that may both participate in challenging the standardized definitions of durability and temper expectations of maximum scalability.

12:30

NETWORKING LUNCH

AFTERNOON PROGRAMME: ROUNDTABLES

The afternoon programme is dedicated to encounters with leading examples of reuse centres, and the people who have established and are managing them. During two parallel series of roundtable sessions, the audience will have the opportunity to learn from a large diversity of experiences, with plenty of room for questions and discussions.

CYCLE A: MATERIALS

In these sessions, we focus on the materials themselves, and bring together diverse reuse centres which share a specialization.

14:00 A1: FINISHING MATERIALS

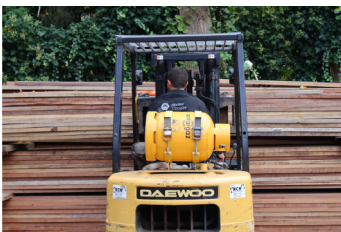
With **Hugo Bonnet** (Cycle Up, FR) and **August Smessaert** (Materialenbank Leuven, BE)

Moderator: **Patty Koppes** (Wiltz)



Hugo Bonnet has a background in civil and structural engineering and spent the early part of his career on major international infrastructure projects in Asia and the United Kingdom. Driven by a commitment to transforming the construction industry, he transitioned toward circular economy and joined Cycle Up in 2019, where he has served as CEO since 2024. He also teaches circular economy and sustainable construction at several French engineering and architectural schools. His core ambition is to make material reuse and circular practices a systematic part of how the industry builds and renovates.

Cycle Up is a French company specialising in circular economy applied to construction, founded in 2017. It operates across three complementary activities: advisory services, supporting public and private clients in integrating reuse, recycled content, and low-carbon strategies into their projects and organisations; Refurbishment, operating workshops dedicated to the reconditioning of construction materials for reuse on projects; and Sector engineering, designing and deploying reuse programmes for industrial players, social economy organisations, and local authorities seeking to launch their own refurbishment activities



August Smessaert has been coordinating director of the Materialenbank Leuven since 2023. With a background in business engineering, followed by several years working as a carpenter, he found his way to Atelier Circuler. Drawing on a business-economic perspective, he helps shape the growth of one of Leuven's most important sustainability pillars: the circular market for building materials. In doing so, he helps navigate the organisation through the societal challenges ahead, grounded in a hands-on understanding of how local circular initiatives work in practice.

Patty Koppes has a background in architecture and construction and has specialised in circular economy project management and development since 2017. She works within the Circular Economy Department of the Municipality of Wiltz, where she is responsible for the development, coordination, and supervision of several projects focused on circular economy practices and local implementation strategies.

The Municipality of Wiltz is a project partner in the Interreg NWE PREUSE Project. Within this framework, Patty is developing a local action plan aimed at strengthening and implementing reuse practices at the local level. One of the key ambitions of this action plan is the creation of Luxembourg's first reuse centre dedicated to construction materials, providing the necessary infrastructure to support reuse projects and circular construction practices in the region.

15:00

A2: ROADWORK MATERIALS

With **Mieke Berkhout** (City of Amsterdam) and **Paul Lesieur** (Université Gustave Eiffel)

Moderator: **Simon Gresset** (Métropole du Grand Paris)



Mieke Berkhout is the Materials broker for the Municipality of Amsterdam. In this role she connects the supply and demand of materials in the public space. In addition, she facilitates the conditions and logistics needed, such as palletizing of bricks, hub and storage locations and implementing internal processes to enable roadwork projects to reuse paving materials. Within the Municipality of Amsterdam, people are accustomed to working in a certain way. That, combined with strict laws and regulations, means that the reuse of paving materials does not happen automatically. Mieke is committed to making reuse more easy. In her free time, she is an avid tennis player and fan; she dreams of doing something related to circularity in that sport since there is still much to be gained.



Paul Lesieur is a PhD student in contemporary history at Gustave Eiffel University. He works on the history of Parisian streets during the 19th century; under the supervision of Loïc Vadelorge (UGE) and Sabine Barles (Paris). His purpose aims to understand how the urban metabolism works, focus on the profession and the technical system which underlie the maintenance of the streets.

Simon Gresset is Head of Team, Circular and Social Economy at the Métropole du Grand Paris, the metropolitan authority for Greater Paris. A partner in the PREUSE project, the Métropole du Grand Paris supports the uptake of secondary materials through direct funding to reuse centres, matchmaking between reuse centres and landowners, the development of a digital platform to match supply and demand for secondary materials, and the creation of a quality certification for reconditioning processes in reuse centres. Simon has a background in circular economy and urban policy, with experience in city-to-city collaboration at both national and European levels.

16:00

COFFEE BREAK

16:30

A3: HISTORICAL MATERIALS

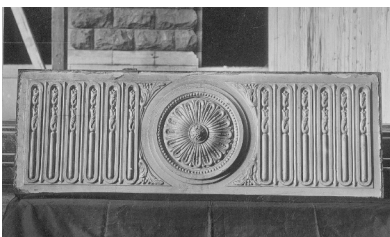
With **Paula Lage** (City of Porto) and **Lara Reyniers** (Vrije Universiteit Brussel, BE)

Moderator: **Arne Vande Capelle** (Universiteit Gent)



Paula Lage is a Senior History Technician at the Municipal Department for Cultural Heritage and Public Art of the Porto City Council, holding a degree in History, as well as a Postgraduate Diploma in Advanced Local Government Management. Additionally, she is a member of the support secretariat to the Municipal Commission for Heritage Protection and of the team for the Inventory of Porto's Architectural Heritage.

She has participated in multiple research projects for the preparation of reports/information on tile heritage within the context of urban planning permission for building alteration and/or renovation works; In situ cataloguing of ceramic elements in civil and religious architecture; Management and monitoring of requests for the provision of tiles and other building elements for building façades and interiors. Currently, she is working on the project "Safeguarding and Enhancement of Tilework in Porto," co-funded by the European Union under the Northern Regional Programme 2030.



Lara Reyniers is a doctoral researcher at the Vrije Universiteit Brussel (VUB), where she is part of the interdisciplinary project Re-building Brussels (1695–2025): the construction sector as an engine for social inclusion and circularity. Her research focuses on the history of demolition in Brussels, examining practices of wasting, salvage, and reuse within their broader political and socio-economic contexts, and how they are documented and reconstructed through archival sources.

Arne Vande Capelle is a doctoral researcher at Ghent University. He focuses on post-war reuse practices in Belgium, considering circularity within the interplay of material, economic, and socio-technical factors. From 2018 to 2024, he worked at Rotor where he contributed to consulting, design, research, and exhibition projects; as well as coordinating opalis.eu, the online directory for reuse dealers. He is the co-author of 'Ad Hoc Baroque: Marcel Raymaekers' Reuse Architecture in Post-War Belgium' (Rotor, 2023), and contributed to the

CYCLE B: PROJECTS

In these sessions, we focus on a single case study per roundtable, and bring together several actors who played a part in their establishment.

14:00

B1: THE PUBLIC-PRIVATE REUSE CENTRE: THE CASE OF ROUBAIX (FR)

With **Valentin Mousain** (Lille European Metropolis), **Léo Pares** (City of Roubaix), **Romain Fine** (La fabrique des quartiers) and **Agnieszka Bogucka** (PRESRV)

Moderator : **Zélie Perrin** (Metropole de Grand Paris)



Valentin Mousain holds a Master's degree in Urban Planning from the University of Lille 1. He previously worked at SCET (Société Centrale pour l'Équipement du Territoire), a French public-private development company specializing in urban planning and territorial development. With over 18 years of experience in managing complex projects, particularly in French Urban Policy (Politique de la Ville), he is currently works as executive project manager on the New Urban Renewal Project for Roubaix on behalf of the MEL (Métropole Européenne de Lille), the metropolitan authority of the Lille metropolitan area in northern France.

He also served as a partner in a European-funded project (2017–2020) and held a temporary teaching position at Polytech Lille (2022-2024), a French engineering school.



Romain Fine is a Project Officer at La Fabrique des Quartiers, a public urban regeneration company dedicated to revitalizing aging and degraded neighborhoods through property acquisition, building rehabilitation, and public space improvement projects. In partnership with its shareholder local authorities, it works to enhance housing quality, attract investment, and foster sustainable urban renewal.



Agnieszka Bogucka is an architect and innovation manager working at the crossroads of design, strategy, and transformation. She has just taken on a new role focused on driving commitment to the circular economy. Her goal is to test, prove, and scale high-impact circular solutions.

Zélie Perrin is Circular Economy Project Manager for the construction sector at the Greater Paris Metropolis (Métropole du Grand Paris). Having worked for six years to promote the reuse of materials, she has spent the past year and a half leading the Metropolis's activities within the framework of two European projects on this topic: CIRCBOOST (Horizon Europe program) for the development of a digital tool to facilitate reuse, and PREUSE for the implementation of an action plan to develop reuse centers.

15:00

B2: THE INTERNAL REUSE CENTRE THE CASE OF UTRECHT (NL)

With **Lieske Oostveen** and **Mirjam Scholtens** (City of Utrecht)

Moderator: **Quirien Reijtenbagh** (TU Delft)



Lieske de Jonge - Oostveen is a policy advisor for Utrecht Circular, with a focus on Sustainable Public Procurement (SPP), where she contributes to the implementation of the Utrecht Circular 2030 policy framework and the SPP Implementation Programme.

In her role as policy advisor, Lieske helps translate municipal ambitions into concrete practices for circular commissioning and sustainable procurement, contributing directly to the organisation's strategic goals and the transition toward a fully circular city. From there, Lieske has played a key role in the development of Utrecht's own reuse centre, where material impacts are essential.



Mirjam Scholtens is an EU funding advisor for the City of Utrecht, working on projects that advance sustainability and the circular economy in a European context. She is involved in initiatives such as the Interreg project PREUSE and closely involved in the development of

Utrecht's own reuse centre, where she supports collaboration, project development and strategic alignment. With experience following the reuse centre development from its early stages, Mirjam brings a practical perspective on how European cooperation can accelerate local circular solutions.

Quirien Reijtenbagh is a PhD researcher and junior lecturer in the Real Estate Management Section of the Department of Management in the Built Environment at the Faculty of Architecture and the Built Environment at TU Delft. Her research focuses on the value of circular strategies in outdoor public spaces.

16:00

COFFEE BREAK

16:30

B3: THE TEMPORARY REUSE CENTRE: THE CASE OF NANCY (FR)

With **Jérôme Burtin** (Maison du Réemploi), **Arnaud Gauthier** (Ajir Environnement) and **Jean-François Briche** (OMh)

Moderator: **Tiphaine Abenia** (Université Libre de Bruxelles)



Jérôme Burtin has been working in the fields of social innovation, regional development and civic engagement for over fifteen years. Currently Head of Partnership Development and Communications Officer at Réciprocité, he has a particular interest in issues relating to re-use, cooperation and the green transition.

Arnaud Gauthier co-founded the consulting firm Ajir Environnement (Arnaud Jean-Dominique Engineering and Environmental Research) Jean-Dominique Hory in 2007.

With a multidisciplinary and international educational background including a Master's degree in Biology (USA) and a Master's degree in Sociology (University of Liège) he assists public and private project owners with sustainable construction: Energy, waste, biodiversity, carbon footprint, air quality, workplace quality of life, climate change adaptation etc.

He also works in the training of future engineers at different institutions including CNAM, Polytech and University of Lorraine.



Jean-François Briche is an Urban Renewal Project Manager at the Office Métropolitain de l'Habitat du Grand Nancy (OMh), the leading social housing provider in the Greater Nancy metropolitan area, which manages more than 6,300 housing units across 15 municipalities in the region.

After an initial career in the military, he joined the Greater Nancy Metropolitan Area as a Special Advisor to the President and later as a Personal Assistant, before joining the OMh in 2020.

His career path has enabled him to support the New National Urban Renewal Program (NPNRU) at various stages and from complementary perspectives: first as a project lead at the Greater Nancy Metropolitan Area during the preliminary phase of the agreement, then as a project manager within the social housing provider during its operational implementation. This dual institutional and operational approach now enables him to address the challenges of urban renewal with a cross-cutting perspective, facilitating dialogue between political actors, institutional partners, and field teams to ensure the success of urban projects

Tiphaine Abenia is an architectural engineer and researcher. She is an associate professor at the Université libre de Bruxelles (ULB), where she coordinates the Construction Cultures program and the Reclaim research center (REsearch in Construction, Law, Architecture and Investigation on Materials) within the La Cambre-Horta Faculty of Architecture.

17:30

NETWORKING DINNER (ON REGISTRATION)

19:00

BUILDING A CULTURE OF CIRCULARITY

Keynote lecture by **Finn Williams** (SE/UK)



Finn Williams has been the City Architect of Malmö since 2021. He previously worked to promote public architecture and planning in the UK through roles at Croydon Council and the Greater London Authority, and as the co-founder and chief executive of Public Practice. Finn is a Mayor's Design Advocate for the Mayor of London, an international jury member for the NLA Awards, an independent expert for the EU Mies van der Rohe Awards and was a jury member for the 2024 Alvar Aalto Medal.

Malmö has a longstanding reputation as a pioneer of sustainable development. However, growing awareness of the climate impacts of construction is prompting a deeper rethink of the conventions that shape urban development itself. This talk explores how Malmö is redefining the role of the city in driving the shift from linear to circular ways of working — moving from one-off pilot projects towards the practices, programmes and policies needed to build a culture of circularity at scale.

DAY 2 FRIDAY JUNE 5TH

BRUSSELS - ON SITE & AT COOP ANDERLECHT

MORNING PROGRAMME: SITE VISITS

After a day of talks and discussions, the morning of the second day allows for actual physical encounters with reuse infrastructure.

9:00

BRUSSELS MUNICIPAL DEPOT FOR ROADWORK MATERIALS



This internal depot, located north of Brussels, is the main depot for roadworks materials for the City of Brussels. It stores the materials (paving, urban furniture and equipment) needed by the roadworks department for small repairs and replacements. The depot serves maintenance works only, and does not store or acquire large batches of materials for (re)construction projects. The large variety of small batches stored on site make for an intriguing sample chart of the city's public spaces, but also comes with challenges in terms of stock management and turnover. The visit will be guided by the managers of the site.

11:00

RECYPARK DEMETS



The Brussels' Recyparks are a network of domestic waste collection facilities managed by the regional agency Bruxelles-Propreté. In an effort to increase the proximity of these facilities to residents, several new Recyparks have been planned in dense urban areas. For the regional agency this is not just a question of convenience, but also an opportunity to promote reuse and recycling practices. This extends to the infrastructures themselves, which are each time the subject of an architecture competition. Recypark Demets was designed by a team comprising of 51N4E (architecture), Witteveen+Bos (structural engineering) and Rotor (reuse). It pioneered the reuse of glued laminated timber structural elements. The visit will be guided by project architect Yann Gueguen.

12:00

NETWORKING LUNCH

AFTERNOON PROGRAMME: PARALLEL WORKSHOPS

THE SYMPOSIUM IS CONCLUDED BY A SERIES OF THEMATIC WORKSHOPS DURING WHICH PARTICIPANTS ARE INVITED TO PROVIDE ACTIVE INPUT AND SHARE PERSONAL EXPERIENCES ON SELECTED ASPECTS OF PUBLIC REUSE INFRASTRUCTURE. THE WORKSHOPS ARE AN ACTIVE EFFORT TO DIVERSIFY THE PERSPECTIVES OF THE PREUSE PROJECT.

13:30 WORKSHOP 1: A STRATEGY TO SET UP AND RUN A REUSE CENTRE

Hosted by **Rotor** (BE)

Rotor is a Brussels based non-profit organization that is interested in material flows in industry and construction, with a particular focus on our relationship to resources, waste and reuse. This has led to a large variety of projects in the fields of research, consultancy, interior and scenography design, exhibition curation and education. In 2013, the association ventured into the reclamation and sale of used building elements, which in 2016 led to the creation of the cooperative company RotorDC (for 'Deconstruction').

13:30 WORKSHOP 2: THE ARCHITECTURE OF REUSE CENTRES

Hosted by **Bellastock** (FR) and **Tiphaine Abenia** (Université Libre de Bruxelles)

Bellastock is a cooperative that has been committed to ecological and social transition in the fields of architecture, construction, and urban planning for over 10 years.

To this end, its team has developed pioneering expertise in France regarding the reuse of construction materials through its design office. This work is driven by the need to reduce construction waste, train professionals, and foster the development of a more sustainable architectural culture. It is accompanied by the need to guide communities toward greater solidarity and diversity through transitional urban planning projects. The cooperative also initiates and leads its own projects, such as its annual architecture festival.

Tiphaine Abenia is an architectural engineer and researcher. She is an associate professor at the Université libre de Bruxelles (ULB), where she coordinates the Construction Cultures program and the Reclaim research center (REsearch in Construction, Law, Architecture and Investigation on Materials) within the La Cambre-Horta Faculty of Architecture.

13:30 WORKSHOP 3: EXPERIENCES FROM THE EUROPEAN CIRCULAR[X]CHANGE NETWORK

Hosted by **materialnomaden** (AT)

materialnomaden GmbH was founded by Andrea Kessler and Peter Kneidinger to advance circular construction and the reuse of building materials and components. Based in Austria, the company develops practical strategies for urban mining, ReUse integration, material recovery, and the creation of innovative ReProducts® from existing resources — transforming discarded materials into valuable architectural solutions with a focus on sustainability, design, and cultural value.

16:00 END OF THE SYMPOSIUM